

KYUSHU 日本 TOURISM MAP



MODEL COURSE

1.VOLCANOES &
ONSEN



2.CULTURE &
HISTORY



Relax & Rejoice
ONSEN ISLAND KYUSHU
JAPAN



Japan.
Endless
Discovery.



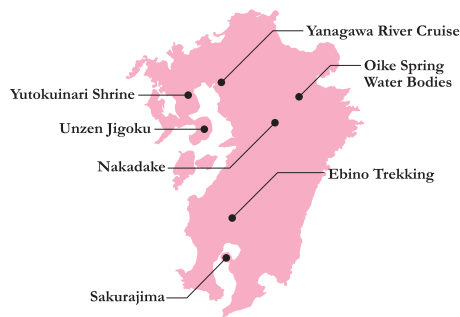
国土交通省
九州運輸局

The Island of Volcanoes and Onsen

A round trip of Kyushu by train & bus.

Many active volcanoes can be found in the Kyushu region, such as Mt. Fugen, Mt. Aso and Mt. Sakurajima. These volcanoes provide the power which generates the region's many famous onsen hot springs, and form beautiful natural landscapes unique to Kyushu. Many of these areas have also been designated as geoparks.

Map &
Model course
Reference



Ebino Trekking (Miyazaki): map D-8

Enjoy hiking in the mountains or deep gorges and experience the natural beauty, unique geological features and unique plant life of the area.



Sakurajima (Kagoshima): map D-9

Sakurajima is an active volcano in Kinko Bay—a familiar symbol of Kagoshima. You can reach the mountain by ferry or car.



Unzen Jigoku (Hells) (Nagasaki): map C-6

Jigoku means “Hell” in Japanese and refers to the hot gasses and boiling hot spring water that erupts from the area. The strong smell of Sulphur is also associated with these hot springs.



Nakadake Crater

Oike Spring Water Bodies (Oita): map E-5

Up to 20,000 tons of fresh water a day springs up in Oike. Oike is located on the northern side of Kurodake in the Mt. Kuju area. Many tourists visit this place to bring back the water which is listed as one of Japan's hundred most famous watering holes.



Yutokuinari Shrine (Saga): map C-5

Established in 1687, and recognized as one of the three largest Inari shrines in Japan, its main buildings are entirely lacquer coated and gorgeously designed in vivid colors. The gods enshrined here are worshiped as guardians for good harvests, prosperity in business and family fortunes.



Yanagawa River Cruise (Fukuoka): map C-5

Ride a small boat slowly through crisscrossing canals and enjoy a unique view of a castle town.



Use a rental car to explore the Culture & History of Kyushu.

Renting a car and travelling through Kyushu on the road is a great way to experience the region. Kyushu's network of highways connect many of Kyushu's top destinations that can be hard to reach via public transport. You could find yourself among nature journeying through a vast valley, or along a beautiful coastline not viewable by any other form of transport. Renting a car in Kyushu is cheap and easy, and with Kyushu's highways and roads uncrowded and easy to navigate, it is a great option for individual travelers, small groups and families.

Map & Model course Reference

Dazaifu Tenmangu Shrine
Kyushu National Museum
Saga Castle Honmaru History Hall
Arita Porcelain Tour
Night View of Nagasaki
Battleship Island
Kumamoto Castle Omotenashi
Busho-tai Samurai Team
Kitsuki: Walk Around in a Kimono
Takachiho Gorge
Kirishima Shrine
Udo Shrine



Udo Shrine (Miyazaki): map F-9

The main hall is in a rocky cave facing the cliff of Hyuga-nada. Why don't you try to throw a "lucky ball (Un Dama)" towards the cavity of "Kameishi" under the cliff to fulfill your wish.

Kyushu National Museum (Fukuoka): map D-2(D-4)

The Kyushu National Museum was established as the fourth national museum in Japan with the concept of "capturing the formation of Japanese culture through the perspective of Asian history."



Dazaifu Tenmangu Shrine (Fukuoka): map D-2(D-4)

Dedicated to the god of scholarship, many high school students visit this shrine in spring to pray for success in their entrance exams. The main shrine building is a nationally designated important cultural property.



Arita Porcelain Tour (Saga): map B-5

Go around visiting locations where Arita ware porcelain is made, with its 400-year history. The area is known as the birthplace of porcelain in Japan.



Battleship Island (Nagasaki): map B-6

This island, that you may have seen featured in the 2012 James Bond movie "Skyfall," is a popular spot for those travelling in Nagasaki. Due to its unusual shape from a distance, as created by its high rise apartments, the island is colloquially known as "battleship Island". The island was originally home to the Hashima Coal Mine and was eventually abandoned in the 1970's making for its ghostly atmosphere in the present day. Tours are available to the island, but landing is dependent on the roughness of the surrounding sea.



Kirishima Shrine (Kagoshima): map D-8

A very old shrine founded in the 6th century. The magnificent vermilion-lacquered main shrine hall was constructed in 1715.



Night View of Nagasaki (Nagasaki): map B-6

One of the three great urban night views in the world, alongside Hong Kong and Monaco. The lights of the port are spectacular.



Saga Castle Honmaru History Hall (Saga): map C-4

The History Hall was built on the Saga Castle Honmaru Goten (citadel inside the castle walls) ruins and contains within it a faithful reconstruction of the insides of the castle itself. This hall is one of the largest reconstructed wooden buildings, and the first restoration of a honmaru goten in the whole of Japan.



Kumamoto Castle Omotenashi Busho-tai Samurai Team (Kumamoto): map D-6(F-10)

Watch an exciting live samurai act and acrobatic dance performed at Sakura-no-baba Josaien next to Kumamoto Castle!



Kitsuki: Walk Around in a Kimono (Oita): map F-4

If you stroll around this castle town wearing a kimono (rentals available), you receive various privileges such as free admission into facilities.



Takachiho Gorge (Miyazaki): map E-6

A V-shaped, steep-walled gorge with a mysterious atmosphere. Why not take a rental boat in order to better view the Manai Falls, named as one of the top 100 waterfalls in Japan?

The Best Onsen

Enjoy Kyushu's hot springs while wearing yukata!

You can visit a variety of onsen hot springs in Kyushu. Every hot spring has its own unique quality and surrounding scenery. Which onsen will become your favourite?



Beppu Onsen (Oita): map F-4

A modern town mixed with a traditional atmosphere, featuring the time honoured Japanese custom of bathing in onsen hot springs.



Kurokawa Onsen (Kumamoto): map E-5

This hot spring town has been refined in its appearance and atmosphere and was additionally classified as a two-star hot spring area in the "2009 edition Michelin Green Guide Japan."



Uchinomaki Onsen

(Kumamoto): map E-5

An elegant hot spring resort, the largest in the Aso area, with over 30 hotels and traditional inns lined up together. This town has a long history of being loved and frequented by artists and literary folk alike.



Ureshino Onsen (Saga): map B-5

A once flourishing post-station town in the Edo Period. Water from the hot spring has long been known for its skin-smoothing properties.



Shiratori Onsen (Miyazaki): map D-8

A public onsen hot spring located on the Ebino Kogen mountainside. Surrounded by a lush forest, listen to echoing birdsong as you soak in the open air baths.



Sakurasakura Onsen / Doroyu (Mud bath) (Kagoshima): map D-8

This onsen hot spring is enveloped by the untouched nature of Kirishima. Why not try the mud bath, famous for its effects on making the skin glisten?

Yufuin Onsen (Oita): map E-4

This is one of the most popular hot springs in Japan. There are many cafes, artists' studios and museums, making for an enjoyable stroll around the town.



Obama Onsen (Nagasaki): map C-6

Obama Onsen features gushing hot spring water from 30 different sources, and also has the warmest hot springs in Japan. You can also watch the beautiful setting sun sink into the ocean while indulging in Japan's longest footbath of 105 meters, which incidentally has a temperature of 105 degrees as well. The footbath is named "Hot Foot 105" in Japanese.



Ibusuki Natural Sand Bath

(Kagoshima): map D-10

Get buried in hot sand on the beach—a unique form of hot spring with a great detoxifying effect.



Gourmet Foods

Enjoy Kyushu's Local, unique delicacies!

Kyushu is well-known for its delicious food and unique regional dishes. Thanks to the warm climate, Kyushu has an abundance of agricultural produce, seafood and good quality livestock.

Chicken Nanban (Miyazaki):

Chicken nanban is a popular dish nationwide, but has its origins in Miyazaki. It is made with crunchy and crispy deep-fried young Miyazaki chicken, dipped in an exquisite sweet and sour sauce, and dressed with tartar sauce.



Sasebo Burger (Nagasaki):

The recipe for this burger originated from the US navy base in Sasebo. Burger shops are located all over the city with each restaurant offering a slightly different variation.

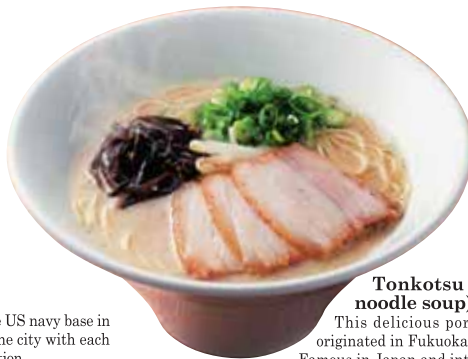


Dago Soup (Kumamoto):

Kumamoto is an area in which you can taste one of Kyushu's traditional cuisines, Dago Soup. This soup is made by kneading dough into a flat dumpling, and then boiling it alongside seasonal vegetables such as radishes and carrots, before miso and soy sauce is added for extra flavor. However, the style and variation of the soup changes from restaurant to restaurant and house to house. One thing is for certain; this soup is great for warming up in the Kumamoto winter.

Kannawa Hell-steamed Studio (Oita):

This is a place where you can experience the unique "hell-steamed cooking" method of the hot springs. Seafood and vegetables steamed using this method are really tasty.



Tonkotsu Ramen(Pork broth noodle soup) (Fukuoka):

This delicious pork broth and noodle soup originated in Fukuoka, Kyushu's bustling capital. Famous in Japan and internationally, why not come down to Fukuoka and give it a try yourself?



Steamed Eel (Fukuoka):

The rice is mixed with sweet soy sauce, then topped with grilled eel and finally steamed. You can taste the eel from every bite.



Hell-steamed Chicken (Kumamoto):

A special dish of the hot spring resort in oguni-cho. Cooked by putting the chicken in the pot and steaming it for more than two hours in the steam from the hot springs.



Yusenpei (Nagasaki):

Baked rice crackers made using hot spring water. The rice crackers have a slightly sweet, refreshing and light texture, and it is also popular as a souvenir.



On Tamaran Bowl (Kagoshima):

This local delicacy of Ibusuki uses locally produced mountain vegetables and seafood. It is also customary to top this dish with an egg boiled in the onsen hot springs to complete the recipe.



Beppu Cold Noodles (Oita):

In Beppu, Korean style cold noodles are eaten often, even in winter. The thick noodles and moderately sour soup are delicious.

Shirokuma (Kagoshima):

Shirokuma, meaning Polar Bear, is Kagoshima's original shaved ice dessert with fruits like banana and cherry piled on top and covered with condensed milk.



Miyazaki Beef (Miyazaki):

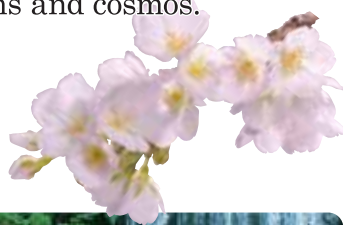
Miyazaki Prefecture is one of the top black beef producers in Japan. The brand name "Miyazaki Beef" is given only to selected meat that meets strict criteria, including tenderness, taste, and color. Its rich and profound taste has garnered it a high reputation both in Japan and overseas.



Seasonal Events

Enjoy events and festivals held only in Kyushu!

Kyushu is really a place for festival lovers, with a plethora of events to pique the interest, including traditional festivals and lively events for the passionate Kyushu people. There are also dozens of places to enjoy seasonal flowers, such as cherry blossoms and cosmos.



Miyama Kirishima at Unzen Mounting Nitta Pass (Nagasaki): [map C-6](#)

Nita Pass, the tourist Mecca of Unzen, is filled with the sight of 10,000 glorious pink Miyama-Kirishima, or Rhododendron kiusianum, from mid-May.



Scenery of the Pottery of Okawachiyama (Saga): [map B-4](#)

In 1657, the Nabeshima clan opened a major porcelain production plant on this mountain. It was forbidden to divulge the intricacies of the manufacturing process by the order of the lords of the realm, and was therefore named the "Village of the Secret Kiln." Nowadays, about 30 of the original pottery shops are still open.



Water Slide at Ryumon Falls (Oita): [map E-4](#)

This waterfall features a natural waterslide which is often packed with people in the summer trying to escape the heat. The waterfall is double-layered and 40 meters wide with a drop of 20 meters.



Saitobaru Burial Mound Site (Miyazaki): [map F-7](#)

Spread about on a hilly area with an altitude of 70 meters is the Saitobaru Burial Mound Site; the largest in Japan with over 300 tombs in the area. In early spring, the rape blossoms bloom first with cherry blossoms following. This is a great place to enjoy ancient history as well as the Japanese custom of cherry blossom viewing.



Umi no Nakamichi Seaside Park, national park (Fukuoka): [map C-3\(B-1\)](#)

There are four seasonal flower gardens, playgrounds, small animal corner and much more on the vast site that 40 times of Yahoo Dome. You can enjoy the place with your family.



Higotai Park (Kumamoto): [map E-5](#)

This park has a collection of flowers and rare species of wild plants native to Aso, such as Higotai, or Echinops setifer, which bloom in summer. Fields of cosmos, with their riot of color, are another special feature of autumn.



Kirishima Geo Park (Kagoshima, Miyazaki): [map D-8](#)

The Kirishima Mountain Range has over 20 volcanoes, including the highest peak on Mt. Karakuni, and a numbers of crater lakes, including Onami-no-ike Pond. It was designated as Japan Geo Park in 2010.



Karatsu Kunchi Festival (Saga): [map B-4](#)

This traditional festival has long history of 200 years and is registered as an Important Intangible Folk Cultural Asset. Every November from the 2nd to 4th, 14 Hikiyama (floats) are carried around the old castle town of Karatsu.



Nagasaki Lantern Festival (Nagasaki): [map B-6](#)

In this festival, held on Chinese New Year, the town is decorated with approximately 15,000 lanterns and large illuminated objects.



Kyokusui Banquet Festival (Fukuoka): [map D-2\(D-4\)](#)

This banquet is held every year in the spring within the grounds of the Dazaifu Tenmangu Shrine. People who dress like noblemen from a thousand years ago gracefully prance around in an age-old imperial ceremony.



Tenryo Hita Doll Festival (Oita): [map E-4](#)

Traditional hina dolls are displayed at various spots around the city, including former noted residences and museums, from mid February to March.



Tobata Gion Yamakasa Festival (Fukuoka): [map D-3](#)

Gion Yamakasa is registered as an Important Intangible Folk Cultural Asset as well as being included as a UNESCO Intangible Cultural Heritage. This traditional event is held in summer and features lanterns at night.



Yatsushiro Myokensai Festival (Kumamoto): [map D-6](#)

This festival is registered as a National Important Cultural Property and also included in UNESCO's Intangible Cultural Heritage. In this festival you can view some of Shinto's most sacred symbols such as the Mikoshi, Shinto Lion and horses as well as the legendary sea creature "Kida" and much more.



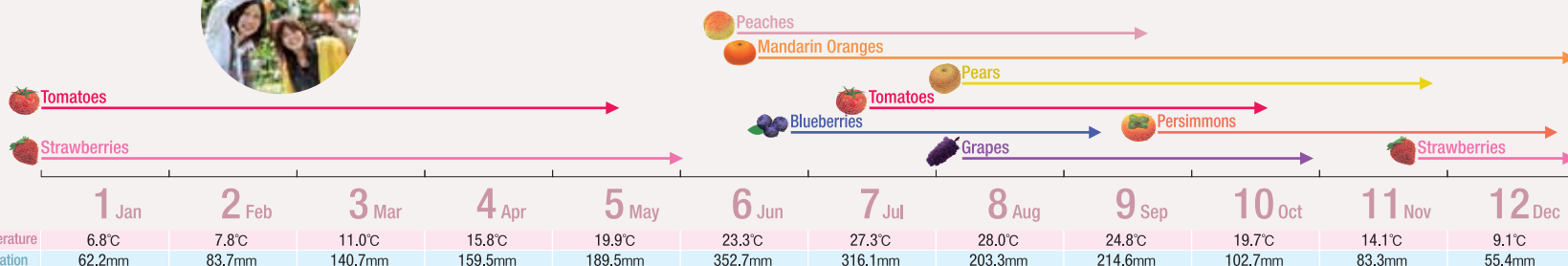
Ohara Festival (Kagoshima): [map D-9](#)

Over 20,000 dancers take part in this festival. It is held on the second and the third of November every year.



Fruit Picking

*The time may vary depending on farmers.



* The data indicates monthly average temperature and average total precipitation in each prefecture in Kyushu (based on the data for January – December 2016, provided by the Japan Meteorological Agency)



KYUSHU TOURISM MAP

JR Kyushu Rail Pass

The JR Kyushu Rail Pass is an economical option for train access that is available to international tourists. You can ride the Kyushu Shinkansen and Limited Express trains as well as the Local and Rapid trains within the designated area that are operated by JR Kyushu. Seats can be reserved at a JR Kyushu train station or JR Kyushu Travel branch.



SUNQ Pass

Ride almost all local and highway buses within Kyushu and Shimonoseki in Yamaguchi Prefecture, as well as some ferries. With unlimited access to 2,400 bus routes in Kyushu, this one bus pass will take you almost anywhere in Kyushu.



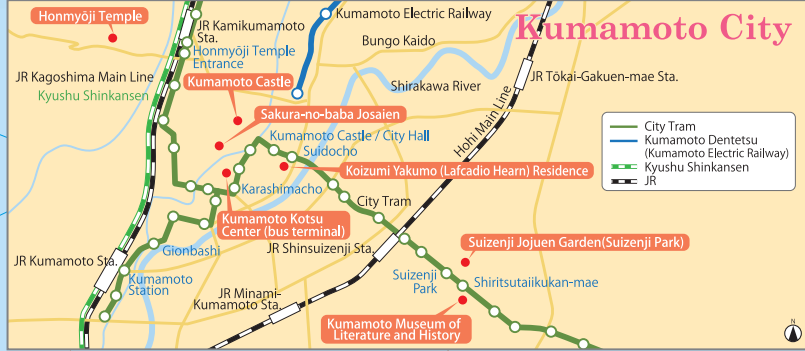
Kyushu Expressway Pass

Note: Urban expressways and toll roads are not included.

The Kyushu Expressway Pass (KEP) is a convenient way for tourists using rental car facility to explore Kyushu. You can choose a pass according to the number of days you plan to stay—from 2 to 10 days—and use it to travel on major expressways as much as you desire for a single flat rate. Note: An ETC card* is required to use KEP.

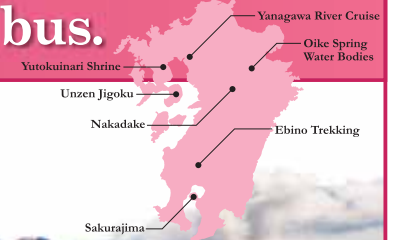


* ETC (Electronic Toll Collection) is a card payment system that allows drivers to automatically pay highway tolls without stopping their vehicle at a toll booth. Some car rental companies will lend an ETC card with their vehicle.



Legend		
Interchange(IC)	Junction(JCT)	Service Area(SA)/Parking Area(PA)
Dazaifu	Tosu-JCT	Kobayashi
Up line of Expressway	Down line of Expressway	Toll road
National road	Sanyo Shinkansen	Kyushu Shinkansen
JR(Japan Railway)	Railway	Sea route
Volcanos and Onsen Model Route	Culture & History Model Route	

The Island of Volcanoes and Onsen/ A round trip of Kyushu by train & bus.



North Kyushu

Day 1	10:00	Fukuoka City	map C-2(C-4)
	11:00	Yanagawa River Cruise	map C-5
	15:00	Yutokuinari Shrine	map C-5
	19:00	Overnight stay in Kashima City	map C-5
Day 2	8:30	Kashima City	
	9:30	Nagasaki City	map B-6
	15:00	Unzen Onsen	map C-6
	18:00	Unzen Onsen Stay	
Day 3	7:15	Unzen Onsen	
	10:00	Kumamoto Castle	map D-6(F-10)
		Suizenji Jojuen Gardens(Suizenji Park)	map D-6(G-10)
	14:30	Aso	map E-5
	18:00	Aso Stay	
Day 4	10:00	Aso	
	13:00	Beppu "Jigoku Meguri"	map F-4
	18:00	Beppu City Stay	map F-4
Day 5		Fukuoka Airport	map C-2(C-4)

Route Bus Express Bus JR Railway Ferry



South Kyushu

Day 1	10:00	Kagoshima City	map D-9
	12:00	Senganen Garden	map D-9
	14:00	Kagoshima City Sightseeing	map D-9
	18:00	Kirishima Onsen Stay	map D-8
Day 2	8:30	Kirishima Onsen	
	10:30	Ebino Eco Museum Center	map D-8
	18:00	Miyazaki City Stay	map F-8
Day 3	13:30	Miyazaki City	
	16:40	Takachiho-cho	map E-6
	20:00	Takachiho Yokagura	
	21:00	Takachiho-cho Stay	
Day 4	9:00	Takachiho-cho	
	12:00	Fukuoka City	map C-2(C-4)
	18:00	Fukuoka City Stay	
Day 5		Fukuoka Airport	map C-2(C-4)

Taxi Route Bus Express Bus JR Railway Shinkansen



All Kyushu

Day 1	10:00	Kagoshima City	map D-9
	11:00	Sakurajima	map D-9
	15:00	Senganen Garden	map D-9
	18:00	Kagoshima City Stay	
Day 2	9:00	Kagoshima City	
	10:00	Kirishima Shrine	map D-8
	18:00	Miyazaki City Stay	map F-8
Day 3	8:00	Miyazaki City	
	11:30	Takachiho Gorge, Takachiho Shrine	map E-6
	19:00	Beppu Onsen Stay	map F-4
Day 4	8:00	Beppu "Jigoku Meguri"	map F-4
	12:00	Aso	map E-5
	16:00	Kumamoto City Shopping	map D-6
	18:00	Kumamoto City Stay	
Day 5	9:00	Kumamoto Castle	map D-6(F-10)
		Suizenji Jojuen Gardens(Suizenji Park)	map D-6(G-10)
	13:00	Shimabara Castle Town	map C-6
	18:00	Unzen Onsen Stay	map C-6
Day 6	9:00	Unzen Onsen	
	11:00	Nagasaki City, Peace Park	map B-6
	13:00	Battleship Island	map B-6
	18:00	Nagasaki City Stay	
Day 7	9:00	Nagasaki City	
	11:00	Yutokuinari Shrine	map C-5
	14:00	Yanagawa River Cruise	map C-5
	18:00	Fukuoka City Stay	map C-2(C-4)
Day 8		Fukuoka Airport	

Route Bus Express Bus JR Railway Shinkansen Ferry



Use a rental car to explore the Culture & History of Kyushu.

North Kyushu

Day 1	10:00	Fukuoka City <small>map C-2(C-4)</small>	
	10:30	Dazaifu Tenmangu Shrine <small>map D-2(D-4)</small>	
	12:30	Yanagawa River Cruise <small>map C-5</small>	
	14:00	Saga Beef Steak <small>map C-4</small>	
	16:00	Arita Porcelain Tour <small>map B-5</small>	
Day 2	18:00	Takeo Onsen Stay <small>map B-5</small>	
	9:30	Takeo Onsen <small>map B-5</small>	
Day 3	10:00	Ureshino Onsen <small>map B-5</small>	
	12:00	Peace Park <small>map B-6(A-1)</small>	
Day 4	13:00	Battleship Island <small>map B-6</small>	
	18:00	Night view of Nagasaki <small>map B-6</small>	
	20:00	Nagasaki City Stay <small>map B-6</small>	
Day 5	9:00	Nagasaki City <small>map B-6</small>	
	10:00	Unzen Onsen <small>map C-6</small>	
	12:00	Shimabara Castle Town <small>map C-6</small>	
	15:00	Kumamoto Castle <small>map D-6(F-10)</small>	
	19:00	Beppu Onsen Stay <small>map F-4</small>	



South Kyushu

Day 1

10:00

Kagoshima City

map D-9



12:00

Kirishima Shrine

map D-8



18:00

Ibusuki Onsen Stay

map D-10



Day 2

9:00

Ibusuki Onsen



10:00

Fukiage Beach

map C-9



13:00

Senganen Garden

map D-9



16:00

Udo Shrine

map F-9



Day 3

18:00

Miyazaki City Stay

map F-8



9:00

Miyazaki City



11:00

Takachiho Gorge

map E-6



Takachiho Shrine

map E-6



15:00

Aso

map E-5



18:00

Minamiaso Onsen Stay

map E-6



Day 4

9:00

Minamiaso Onsen

map E-6



10:00

Museum Seiwa Bunraku

map E-6



13:30

Aoi Aso Shrine

map D-7



15:00

Ebino

map D-8



18:00

Kagoshima City Stay

map D-9



Kagoshima Airport

map D-8



Day 5



Rent-a-car

Access

International Flights to (from) Kyushu

Southeast Asia	Korea
Singapore → Fukuoka	Seoul → Fukuoka
Bangkok → Fukuoka	→ Kitakyushu
Hanoi → Fukuoka	→ Saga
Ho Chi Minh → Fukuoka	→ Kumamoto
Manila → Fukuoka	→ Nagasaki
China	→ Oita
Beijing → Fukuoka	→ Miyazaki
Shanghai → Fukuoka	→ Kagoshima
→ Saga	Busan → Fukuoka
→ Nagasaki	→ Kitakyushu
→ Kagoshima	Daegu → Fukuoka
Dalian → Fukuoka	Taiwan
→ Kitakyushu	Taipei → Fukuoka
Qingdao → Fukuoka	→ Miyazaki
Guangzhou → Fukuoka	→ Kagoshima
Wuhan → Fukuoka	Kaohsiung → Fukuoka
Nanjing → Fukuoka	→ Kumamoto
Chengdu → Fukuoka	United States
Hong Kong → Fukuoka	Guam → Fukuoka
→ Kumamoto	Honolulu → Fukuoka
→ Miyazaki	Finland
→ Kagoshima	Helsinki → Fukuoka
Macau → Fukuoka	

*1 The information above is as of October 2016.



Tokyo, Osaka, Nagoya → Kyushu



Airline

The diagram illustrates flight routes from Tokyo to Osaka and Nagoya. It is organized into two main sections: one for flights from Tokyo (Haneda) and another for flights from Tokyo (Narita). Each section lists destinations (Osaka and Nagoya) and provides flight times and aircraft types for various airlines.

From Tokyo (Haneda):

- Osaka (Itami):**
 - Fukuoka: 1h 55 min
 - Kitakyushu: 1h 45 min
 - Saga: 1h 55 min
 - Nagasaki: 1h 55 min
 - Kumamoto: 1h 50 min
 - Oita: 1h 40 min
 - Miyazaki: 1h 45 min
 - Kagoshima: 1h 55 min
- Nagoya (Chubu):**
 - Fukuoka: 1h 25 min
 - Nagasaki: 1h 30 min
 - Kumamoto: 1h 25 min
 - Oita: 1h 15 min
 - Miyazaki: 1h 20 min
 - Kagoshima: 1h 30 min

From Tokyo (Narita):

- Osaka (KIX):**
 - Fukuoka: 2h 05 min
 - Saga: 2h 15 min
 - Kumamoto: 2 h
 - Oita: 1h 50 min
 - Kagoshima: 2 h 10 min
- Nagoya (Komaki):**
 - Fukuoka: 1h 30 min
 - Kumamoto: 1h 30 min

A map of Japan is shown in the bottom right corner, highlighting the flight routes.



Shinkansen

Tokyo Sta.	4 h 55 min	Hakata Sta.
Nagoya Sta.	3 h 20 min	
Shin-Osaka Sta.	2 h 25 min	
Shin-Osaka Sta.	3 h	Kumamoto Sta.
Shin-Osaka Sta.	3 h 45 min	Kagoshima-chuo Sta.

Inquiries **Kyushu Tourism Promotion Organization**

7f Denki Bldg.Kyosokan,2-1-82 Watanabe-dori,

Tel: +81-92-751-2947 Fax: +81-92-751-2944

E-mail: gtp@welcomekyushu.jp

URL: <http://www.welcomekyushu.com>



Issued by Kyushu District Transport Bureau
2017.3