

KYUSHU

کیوشو



Relax & Rejoice
ONSEN ISLAND KYUSHU
JAPAN



Beautiful four seasons and hot springs KYUSHU – Japan –

Kyushu offers visitors numerous opportunities to relax and heal both the mind and body, with a variety of attractions, such as beautiful seasonal scenery and an abundance of hot springs. Although not 100% halal, there are Muslim-friendly facilities, accommodations and restaurants to choose from throughout Kyushu.



Kyushu is a wonderful place to live, one of the best spots in Japan

I have been living in Kyushu ever since I came to Japan, and I definitely think it was the best choice for me. The people are friendly, and we are surrounded by beautiful nature. My friends from my country living in different areas in Japan often say they envy my good fortune.

The most attractive part of Kyushu for me is the seasonal beauty, that includes cherry blossoms in spring, colorful trees in autumn, and snow in winter. It was an unforgettable moment when I saw snow for the first time in my life.

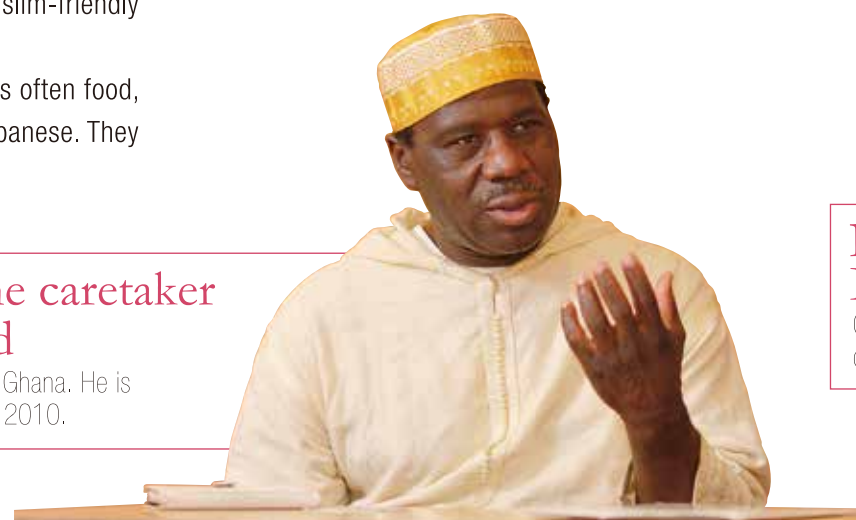
Fukuoka Masjid is open to everyone.

Fukuoka Masjid was established in 2009 with the important mission of introducing Islam to Japanese people in order to allow them a better understanding of it. We have provided a variety of programs, including cooking classes and lectures in Japanese. We have also received a number of Muslim tourists and provided information on Muslim-friendly restaurants, hotels, and prayer places.

The biggest problem for these tourists is often food, especially because they cannot read Japanese. They

Ishak Amagasa, the caretaker of Fukuoka Masjid

Came to Japan 18 years ago from Ghana. He is the caretaker of Fukuoka Masjid since 2010.



Kyushu also boasts numerous hot spring resorts and a variety of festivals all year round. In Indonesia, we don't have any special days, such as the Dolls festival in March and Children's Day in May, to pray for the healthy growth of children.

However, there are some negative sides of living in Japan, especially with regard to food. I often cook meals at home to take out and eat with cooked rice I buy at a convenience store when I eat outside my house. There are no worries when eating rice balls, udon noodles or sushi from convenient stores, but I have to be very careful of eating other things, which means I need to read the ingredients on the packaging carefully.

That said, there has recently been an increase in the number of restaurants and supermarkets that serve or sell halal food. I used to have to buy imported meat, but now I buy halal-certified food produced in Kyushu. This is much better as it is far more delicious than the imported varieties.



Reza Fatahilah Shah

Came to Japan in 2006 from Indonesia, and now lives in Fukuoka with his wife and three children.

also get confused by the differences in lifestyle. For example, Japanese people can be quite tactile regardless of the gender of the person they are communicating with. Muslims know that they don't intend any offensive by this, but it can be very uncomfortable nonetheless. Unfortunately, Japanese people are still not familiar with Islamic culture.

Kyushu has a lot to offer, for example, beautiful uncrowded streets and a peaceful atmosphere because

of the kindness and gentleness of the local people. Therefore, there is a lot of potential for it to become a more comfortable place for Muslims to live in or visit if they have more opportunities to interact with Japanese people for further mutual understanding. In order to promote this, and share information, Fukuoka Masjid has formed the South Japan Association with four other mosques in Kumamoto, Beppu, Kagoshima and Hiroshima.

Nureddin Saadi, Imam of Fukuoka Masjid

Came to Japan in 2006 from Libya. He is Imam of Fukuoka Masjid since 2013.



Consideration for Muslims

- Corresponding to the needs of food and prayers for a comfortable journey -



MUSLIM OWNER



PORK FREE



ALCOHOL FREE



PRAYER SPACE AVAILABLE

Lodging

In general, there are two types of accommodations in Kyushu. One is hotel and the other is ryokan. In ryokans, guests can experience Japanese culture by its Japanese architecture, tatami rooms and yukata. There are also ryokans that lend prayer accessories and serve Muslim-friendly meals.

Hotel New Otani Hakata Fukuoka



This is one of the main hotels in Fukuoka and Kyushu. Close to Tenjin and Hakata Station, it is located at a convenient location for sightseeing and business. Apart from lodging, this hotel is also popularly used for a variety of purposes such as meetings and banquets. The hotel restaurants use locally produced vegetables and fruits, while the Japanese and French restaurants serve Muslim meals upon prior reservation. In the

case of buffet, photos are displayed in front of each dish to inform the ingredients used (i.e meat or fish). For grande menu, the staff will explain the ingredients used in English so that guests can enjoy your meal with confidence. In addition, there are also multipurpose, private dining rooms for groups from 2 to 20 people for guests to use.

MAP B-3 FUKUOKA



Pictures are displayed in front of the dishes to indicate pork, chicken or fish.



"Please feel free to inform us your request" the Head Chef.



Easily accessible as it is only a walking distance to Tenjin

1-1-2 Watanabe-dori, Chuo-ku, Fukuoka City, Fukuoka ☎+81-92-714-1111
Access: Approximately 1 minute walk from Watanabe-dori subway station, Approximately 1 minute walk from Watanabe-dori bus stop, Approximately 10 minutes by car from Fukuoka Interchange
[<http://www.newotani-hakata.com/>]

Please inform us if you are a Muslim when making reservation and check the ingredients of food and drinks on your own.

Ayunosato Hitoyoshi



This hot spring inn is located at a prime location overlooking Kuma River and Hitoyoshi Castle Ruins. The services for foreign guests are enhanced with the availability of English indoor guide and room information, and resident English-speaking staff. In the amenity goods set for Muslims (which has prayer mats, Mukenah, bathing pants and indoor slippers), a printed copy of Japan prayer times is also included. Muslim guests

can enjoy Japanese-inn-style sumptuous servings with confidence, such as the rare, halal beef steak and halal Japanese-Western fusion kaiseki cuisine for dinner. In addition, optional services such kimono or yukata-wearing and tea ceremony experience (chargeable) are also available to promote understanding of the Japanese culture.



Halal ingredients are used in our servings for you to enjoy with confidence.



Amenity goods proposed by MHC* prepared by our waka-okami who is also our Halal-related Managers. (*MHC: Malaysia Halal Corporation Co., Ltd.)



Room with indoor hot spring are also available.

30, Kokonoka-machi, Hitoyoshi City, Kumamoto ☎+81-966-22-2171
Access: Approximately 10 minutes walk from JR Hitoyoshi station, Approximately 1 minute walk from Kokonoka-machi bus stop, Approximately 5 minutes by car from Hitoyoshi Interchange
[<http://www.ayunosato.jp/>]

Please inform us if you are a Muslim when making reservation and check the ingredients of food and drinks on your own.
Halal meat is available upon reservation.
It's not available on a daily bases.

Tourist facility

There are many tourist spots such as natural scenery, historical parks and family attractions in Kyushu. There is also a hot spring in various places in Kyushu; some have private baths which Muslims guests can enjoy with their families.

Huis Ten Bosch Sasebo



Huis Ten Bosch is a theme park that reproduces the streets of medieval Europe and canals, and a vast site where visitors can enjoy the seasonal Japanese flowers. Throughout the year, the park boasts its world's largest illuminated lightings, entertaining music and shows, and fun-filled games and attractions that stimulate the senses. As one day is not enough to cover the extensive attractions, the park also

provides restaurants and hotels. The hotel's restaurant offers delicacies using a plenty of safe local ingredients. If advanced reservation is made, the restaurant can prepare vegetarian menu or dishes using halal meat for Muslim as requested. Have fun in the park and enjoy our good food.



French dish using locally produced vegetables for Muslim guests. Japanese-style dishes are also available.



"We also conduct workshops on Halal. We aim to improve our services by further enhancing our understanding about Muslim culture," said Mr Tomohiro, the manager.



Huis Ten Bosch Hotels
Huis Ten Bosch, Sasebo City, Nagasaki
☎+81-956-26-0526(English)
Open 9:00~22:00(Changes according to season)
Access: Next to JR Huis Ten Bosch station, Next to Huis Ten Bosch bus stop. Approximately 15 minutes by car from Sasebo Daito Interchange
[<http://www.huistենbosch.co.jp/>]

※Muslim meals are only available in Huis Ten Bosch hotels.
Please inform us if you are a Muslim when making reservation and check the ingredients of food and drinks on your own.
Halal meat is available upon reservation.
It's not available on a daily bases.

Hyotan Onsen Beppu

Hyotan Onsen is a worldwide long-established hot spring facility in Beppu hot spring area that has been loved by many for more than 90 years. It has also won three stars (the highest rank) in the "Michelin Green Guide Japon". Its greatest charm is the 100% original, quality flowing hot spring water. Muslim guests can use private family bath to relax and release their fatigue alone, or with their family. Guests are also welcomed to try footbath that can be enjoyed

without having to take off their clothes. In addition to bathing, there are also other ways to enjoy hot spring, such as drinking the spring water which is good for the stomach, or inhaling and applying the fumeroles to the skin. "We are trying our best so that our Muslim guests will not only have a good time at the hot spring but will also be able to enjoy(halal)delicious meals served at our restaurants," said the manager enthusiastically.

MAP D-1 BEPPU



There are two types of family bath - open-air and in-house. The hot spring water is changed before every check in time for all rooms. ※No stay.



"It is a kind of clothes that guests can wear in the family bath (for men - covers from just above the navel down to the ankle)," said Mr. Tanaka, the President with a smile.



Fumaroles for inhalation is popular with women as it is said to be good for the skin.



Footbath is the easiest way to enjoy hot spring (free).

159-2 Kannawa, Beppu City, Oita
☎+81-977-66-0527 /Open 9:00~1:00/
Closed None(Temporarily closed in mid April/July/December for maintenance work)
Access: Approximately 30 minutes' walk from JR Beppu-daigaku station, Approximately 8 minutes by car from Beppu Interchange
[<http://www.hyotan-onsen.com/>]

Please inform us that you are a Muslim when making reservation.

Consideration for Muslims

- Corresponding to the needs of food and prayers for a comfortable journey -



MUSLIM OWNER



PORK FREE



ALCOHOL FREE



PRAYER SPACE AVAILABLE

Food

In Kyushu, there are 100% halal restaurants owned by Muslims and shops selling halal food ingredients. There are also restaurants managed by Japanese that serve dishes using halal ingredients. In addition, there are also Muslim-friendly restaurants that do not serve pork. All these options are for you to choose from according to your beliefs.

Tempura Ebina Tosu

A popular restaurant with customers coming from afar just to enjoy its fresh seafood and extensive menu. The oil used for frying its specialty tempura is a mix of 3 types of vegetable oils. New batch of oil is used for Muslim diners to ensure it does not mix with Haram ingredients. Guests can enjoy season's vegetables, fruits, and a variety of fresh, carefully-picked seafood as requested. Savor the freshly fried tempura by dipping

it onto a few types of natural salt and citrus fruit juice for a refreshing taste. The tentsuyu or tempura soup stock does not use shoyu (soy sauce) but a high-grade kelp stock that enhances the total flavor. "As much as the good taste, I would be happy if our diners could feel the four-seasons of Japan through our selection of tempura ingredients", remarked the restaurant manager with a smile.



The ingredients are strictly selected by the restaurant manager himself at the market. It is exciting to get to taste the season's specialties.



My motivation is to see our surprised diners when they find the "season" in the dish and feel happy with the taste.



474 Yabumachi, Tosu City, Saga
☎+81-942-82-7611
Open 11:00~14:30(last order), 17:00~20:30(last order)/Closed Tuesday
Access: Approximately 8 minutes walk from Futsuharadanchi-mae bus stop, Approximately 10 minutes by car from Tosu Junction
[http://tempura-ebina.area9.jp/]

Please inform us if you are a Muslim when making reservation and check the ingredients of food and drinks on your own.

Rajpoot Halal Foods & Spices Kagoshima

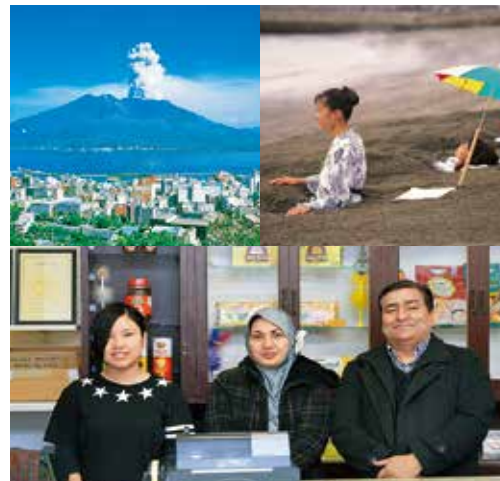
This is a halal food specialty store located about 1 minute walk from Kagoshima Masjid. Having lived in Kagoshima for 15 years, the owner aims to provide Muslim community in Kagoshima with food that they are confident enough to consume. There are halal spices, meat, curry and many other items imported from around the world in this shop. Products that are popular among Muslim travellers include halal snack and juices to be consumed in between their travelling

time. Apart from that, various curry retorts and instant cup noodles that can be easily consumed in their hotel rooms are also hot selling. As Mr Afzal assured, "There are many must-visit places in Kagoshima such as steamed bath that allows visitors to wear clothes while enjoying it, and hot spring bath and volcanoes of Sakurajima. You can indulge in Japanese culture and amazing sceneries without having to worry about halal food."

MAP A-2 KAGOSHIMA



There are many halal food from various countries - some might be the tastes you are very much familiar with.



"We are near to Kagoshima Masjid. Please feel free to drop by."



1F, Mori Building, 84-18 Masago-cho, Kagoshima City, Kagoshima
Tel・Fax +81-99-204-7840, +81-90-8397-4488(Afzal)
Open 10:00~20:00/
Closed Sunday and public holidays
Access: Approximately 10 minutes by car from JR Kagoshima Chuo station, Approximately 15 minutes from Kagoshima Interchange

Nabi san Fukuoka

This is an Indian-Egyptian restaurant whose owner and chef are Muslims. All menu is halal so Muslim diners can enjoy their meals with confidence. It has an array of menu such as biryani, curry, moussaka, kebab and many more, while the chef's specialty Nan

is so crispy it is irresistible. The rich taste of spices, arranged accordingly by our experienced chef will satisfy the taste buds of diners who come from various countries. The lunch set menu is also extensive and served at a reasonable price.



Hawawshi, spicy meat mince stuffed in pitta bread roasted in the oven.



Nabi san helps you celebrate your event by preparing delicious party trays of his best menu with reasonable price.



1-27-3 Motohama, Nishi-ku, Fukuoka City, Fukuoka/☎+81-90-4484-4020(Nabil Amer)
Open 10:00~19:30/Closed Sunday/
Access: Approximately 12 minutes by car from JR Kyudagakentoshi station, Approximately 20 minutes by car from Fukuishi Interchange

Bungo Ramen Itto-Ryu Beppu

Ramen has been one of the most sought for Japanese-style dish around the world recently. Among many varieties of ramen, Kyushu ramen is one of the most popular menu in Japan and being sought-for during every visit to Kyushu. At Ittouryu, we have created the "red" and "white" Kyushu ramen recipe specifically for Muslim customers. The broth is made using tofu and sea-food base to reproduce the original taste.

The "red" ramen is the hot-and-spicy type, and the "white" ramen is for the mild taste. The level of spiciness can be adjusted by adding more "secret red sauce" made using garlic and chillies. Even the Muslim residents of Beppu love the taste. Its popularity is gaining more and more repeaters.

MAP B-3 BEPPU



The white ramen with a mild taste. The seafood-based broth is gaining popularity even among Japanese customers who are very selective about ramen.



Mr Kubota assures, "We use separate pans and knives for Muslim customers. Please do not hesitate to try our ramen."

Please inform us if you are a Muslim when making reservation and check the ingredients of food and drinks on your own. Halal meat is available upon reservation. It's not available on a daily bases.



1-15 Mochigahama, Beppu City, Oita
☎+81-977-25-6262
Open 11:00~22:00/Closed Monday
(Opens if Monday is a public holiday)
Access: Approximately 15 minutes' walk from JR Beppu station, Approximately 15 minutes by car from Beppu Interchange

Hotel Nikko Kumamoto Kumamoto

This hotel is right in the downtown of Kumamoto and has a great accessibility to the shopping arcades, government offices and even Kumamoto Castle. From the hotel, it only takes 1.5 hours to drive to Mount Aso, an active volcano known as having the world's largest

Caldera. The hotel is able to accommodate the dietary and religious needs of Muslim guests, although advance notice before arrival is required.

MAP B-2 KUMAMOTO



The photo shows the regular menu of French restaurant, Les Celebrities. The restaurant also provides special food preparations upon request.



Enjoy the fresh local delicacies of Kumamoto.



Each room is equipped with a qibla compass inside the desk drawer to indicate the direction of Mecca.
2-1, Kamitori, Chuo-ku, Kumamoto City, Kumamoto
☎+81-96-211-1111
Access:
10-minute drive from JR Kumamoto Station, or a 30-minute drive from Kumamoto IC.

Please inform us if you are a Muslim when making reservation and check the ingredients of food and drinks on your own.

A area

Area A is the largest urban area in Kyushu that is also the main entrance by sky and land from Asia. Up north, there is Space World, a leisure tourist attraction and down south, there is Yanagawa, a place to relax and enjoy the nature. In the west, there is Nagasaki, a tourist destination that surrounds you in an exotic mood due to the mix of Chinese and Western culture.



MUSLIM OWNER PORK FREE ALCOHOL FREE PRAYER SPACE AVAILABLE

Fukuoka

Yanagawa Dazaifu Asakura Ukiha

Yanagawa River Boat Tour

Visitors can enjoy the castle town view on a small boat tour through the canal crisscrossing the town.



Harazuru Onsen Taisenkaku



Kyushu National Museum

The Kyushu National Museum was established as the fourth national museum in Japan with the concept of "capturing the formation of Japanese culture through the perspective of Asian history."

MAP E-3 FUKUOKA



Ukiha Fruit Picking

Flourished fruit trees at the foot of the Mino Mountain Range are ready for strawberry picking from January to May, grapes, pear, persimmon and orange picking from early winter to late summer.

Indian and Pakistani Food Zaeka

MAP A-2 FUKUOKA



A variety of curry menu such as chicken, seafood and others.

An Indian and Pakistani restaurant serving only halal menu prepared by Muslim chefs.

1-3-4 Maizuru, Chuo-ku, Fukuoka City, Fukuoka/☎+81-92-732-7513 / Open 11:00~15:00, 18:00~23:00/Closed No fixed day/ Access: Approximately 10 minutes' walk from Tenjin subway station or Akasaka subway station. Approximately 5 minutes by car from Tenjin-Kita Interchange [http://zaeka.jp/]

Tosu



Tosu Premium Outlets®

The largest outlet shopping mall in Kyushu featuring domestic and foreign brands.

Mizutaya Confectionery



A long-established, Japanese traditional confectionery shop that has acquired halal certification. Also suitable for souvenirs.

1-970 Hon-machi, Tosu City, Saga/☎+81-942-82-2071 Open 9:00~18:00/Closed No fixed day/ Access: Approximately 7 minutes walk from JR Tosu station, Approximately 15 minutes by car from Tosu Interchange [http://www.mizutaya.com/]

Please inform us that you are a Muslim when making purchases. Please check the ingredients of food and drinks on your own as not all items are halal-certified.

Kitakyushu



Kitakyushu Manga Museum

There is a display of manga pieces devoted to the local area, free reading from a collection of thousands of manga.



Ito Den emon's Mansion

A mansion where the coal mine king, Ito Den Emon and singer Byakuren resided, which also housed an exquisite collection of Hina Dolls.

Nagasaki



Nagasaki night view

Along with Hong Kong and Monaco, Nagasaki has been selected as the "New World's Three Great Night Views. It is wrapped in the swirl of light in the center of the Nagasaki harbor.

column



Warship Island (Gunkanjima)

It was once flourished as a seabed coal mine but it became a deserted island after the closure. Its warship appearance gained much popularity. A World Cultural Heritage. About 2 hours on cruise from Nagasaki Harbor.



Glover Garden

This is the house of Thomas Glover, a foreign trade merchant who contributed to the trading activities of modern Japan. This house has been registered as a World Heritage site in 2015.

Saga·Ureshino



Hizen Yumekaido

This is a theme park that reproduces the Edo era. Visitors can take photos in samurai or princess attire and enjoy ninja shows.



Kawakamikyo Gorge

A tourist spot to enjoy cherry blossoms in spring and foliage in autumn. Especially in spring, the view of about 600 colourful carp banners set up at the river is really stunning.

Indian restaurant MILAN



Serves a vast variety of curry. Match it with naan bread and you'll get more.

An Indian restaurant serving a fusion of authentic and Nagasaki taste in their menu.

1-15 Kabashimamachi, Nagasaki City, Nagasaki/☎+81-95-820-8189/ Open 10:00~22:00/Closed No fixed days/ Approximately 5 minutes' walk from JR Nagasaki station, Approximately 5 minutes by car from Nagasaki Interchange (via Nagasaki Dejima route) [http://www.nagasakimilan.com/]

Please inform us if you are a Muslim when making reservation and check the ingredients of food and drinks on your own.

Authentic Malay home-cooked food

Malaya



Halal menu (seafood) is always available without having to make reservation. Seasonings used are also halal.

※For halal meal using meat, please make reservation 2 days beforehand.

4-4 Kozenmachi, Nagasaki City, Nagasaki/☎+81-95-826-6933/ Open 11:30~15:00 (0.514:30) 17:30~22:00 (0.521:30)/ Closed Sunday/ Access: Approximately 5 minutes' walk from municipal electric railway Sakuramachi station, Approximately 10 minutes by car from Nagasaki Interchange [http://www.malaya2000.com/]

Please inform us if you are a Muslim when making reservation and check the ingredients of food and drinks on your own.

column



Saga International Balloon Fiesta

Asia's largest hot air balloon festival that takes place in Saga City early November each year.

Kawakamikyo Gorge Hot spring, Ryutoen Hotel



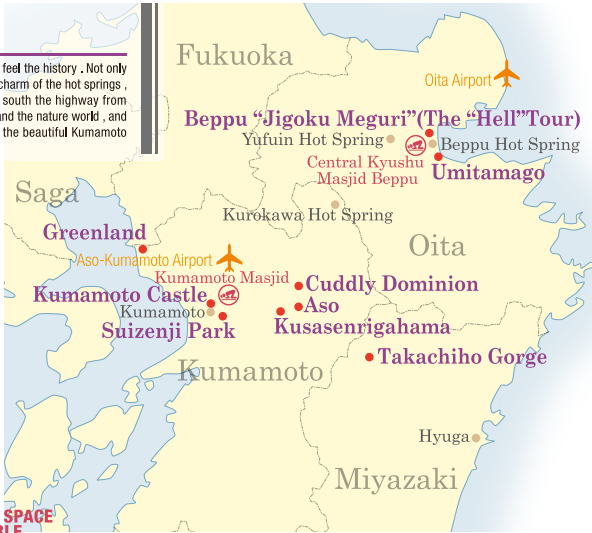
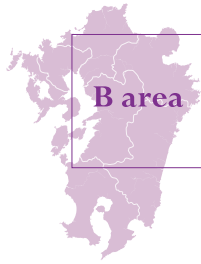
Japanese cuisine can be prepared using strictly selected ingredients without using pork.

120 Yamatocho Oaza Umeno, Saga City, Saga/☎+81-952-62-3111/ Access: Approximately 20 minutes by car from JR Saga station, Approximately 5 minutes' walk from Youth Pier Iriguchi bus stop, Approximately 3 minutes by car from Saga Yamato Interchange [http://www.ryutoen.co.jp/]

Please inform us if you are a Muslim when making reservation and check the ingredients of food and drinks on your own.

B area

Area B, hot springs and nature , the area feel the history . Not only soak in Beppu , you can experience the charm of the hot springs , such as around hot springs . When the south the highway from Beppu , Aso there is the largest caldera and the nature world , and further towards the west you can meet the beautiful Kumamoto Castle and Japanese garden .



Umi Jigoku



Chinoike Jigoku

Beppu “Jigoku Meguri”(The “Hell”Tour)

MAP D-1 BEPPU

This is a popular tourist spot in Beppu. Visitors can enjoy watching the energy of hot springs manifested by its boiling water, fumarolic gas and thermal mud.



Jigoku-mushi Kobo Kannawa

MAP D-1 BEPPU

This is a place where you can experience the unique “hell-steamed cooking” method of the hot springs. Seafood and vegetables steamed using this method are really tasty.

Halal food restaurant Yusha

MAP B-3 BEPPU



Chicken curry, mutton curry, biryani

A restaurant well-patronized by Muslims. Serves a wide variety, 100% halal menu.

9-26 Wakakusacho, Beppu City, Oita/☎+81-977-23-5532 +81-80-3952 3560(Md Monzul Islam)/Open 11:00~15:00(O.S14:30),17:00~22:00(O.S21:30) Closed Monday/Access:Approximately 25 minutes' walk from JR Beppu station Approximately 15 minutes by car from Beppu Interchange

Indian Curry Restaurant Purunima

MAP B-2 BEPPU



A variety of course menu, set menu and ala carte are available for you to choose from.

Large, freshly-baked naans are free for second helpings.

1F, Kopo Kousei, 13-20 Nishinoguchi, Beppu City, Oita/☎+81-977-21-2558/ Open 11:00~15:00(O.S14:30),17:00~22:00(O.S21:30)/Closed No fixed day/ Access:Access Approximately 15 minutes' walk from JR Beppu,Approximately 10 minutes' by car from Beppu Interchange [http://www.purunima.jp/]

Please inform us if you are a Muslim when making reservation and check the ingredients of food and drinks on your own.



Umitamago

MAP A-3 BEPPU

This aquarium is built on the theme of "befriending animals". The unique dolphin and walrus shows are very popular.

Kumamoto



Kumamoto Castle

MAP B-2 KUMAMOTO

Built in 1607, this leading castle in Kyushu is one of Japan's three most prominent castles. The glorious main building (honmaru) was recently being restored.



Sakuranobaba Josaien

MAP B-2 KUMAMOTO

These lines of stores are adjacent to Kumamoto Castle, selling Kumamoto specialties and limited goods of Josaien.



Suizenji Park

MAP D-3 KUMAMOTO

This renowned garden of Kumamoto was built during Edo period. It is a beautiful circuit style garden spreading around a huge spring-fed pond.

Kumamoto Halal Food

MAP C-1 KUMAMOTO



Offers a wide variety of halal produce

Sells halal-certified products and ingredients such as halal beef, mutton, chicken, duck and spices from Pakistan, Indonesia and Thailand.

5-5-10 Kurokami, Chuo-ku, Kumamoto City, Kumamoto/ ☎+81-96-343-7568(Japanese/English)/Open Monday to Saturday 13:00~19:00, Friday 14:00~19:00,Sunday 13:00~16:00/Closed Wednesday/Access:Approximately 20 minutes walk from JR Tatsutaguchi station, 2 minutes walk from Kumamoto Masjid,15 minutes by car from Kumamoto Interchange[http://www.siswahyu.com]



Greenland

The Greenland resort attracts approximately 3 million visitors each year. Its amusement park offers an exciting, fun-filled day. There are also two hotels and a golf course adjacent to the park.

Aso



Kusasenrigahama

Visitors can enjoy horse-riding on the grassland that spreads in the middle Aso-Eboshiodake, with the volcanic smoke of Nakadake in the background.



Cuddly Dominion

This is one of the spots in the middle of vast wilderness of Aso where you can enjoy petting animals with your family.

The reserved seat of Aso Plaza Hotel

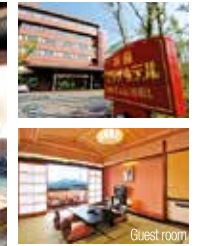


A hotel with private hot spring bath. Halal meals are prepared upon request.※Please make advance reservation for private hot spring bath.

Please inform us if you are a Muslim when making reservation and check the ingredients of food and drinks on your own. Halal meat is available upon reservation. It's not available on a daily bases.



1287 Uchinomaki, Aso City, Kumamoto/☎+81-967-32-0711/ Access:10 minutes by free shuttle bus from JR Aso station, Approximately 70 minutes by car from Kumamoto Interchange [http://www.asoplaza.co.jp/]



Guest room

Takachiho



Takachiho gorge

This V-shaped canyon is wrapped in a mysterious atmosphere. There are also rental boats to go near to Manai waterfall which is also one of Japan's top 100 waterfalls.

column



Yokagura Dance of Takachiho

This traditional dance is offered to convey gratitude to God for the productiveness of crops. A part of it will be offered to Takachiho shrine every night.

Juniper Inn Shikimi



"Takachiho soshoku monogatari" using fresh and safe plant-based produce cultivated in Takachiho


Serving Japanese traditional cuisine in the land of myths.

729-29 Mitai, Takachiho-cho, Nishiusuki, Miyazaki/☎+81-982-72-3733/ Access:Approximately 10 minutes by car from Takachiho bus stop, Approximately 70 minutes by car from Kumamoto Interchange [http://shikimi.jp/]

Please inform us if you are a Muslim when making reservation and check the ingredients of food and drinks on your own. We do not serve Muslim-friendly menu for dinner. However, it is available for lunch and other times of dining.

Carea

Area C, located in the southern area of Kyushu, consists of Kagoshima is the home of Sakurajima, an active volcano and Miyazaki, a resort area that faces the Pacific Ocean. To the north of Kagoshima is Kirishima, that is famous for Kirishima Shrine and further north is Hitoyoshi, a tourist spot rich with Japanese culture that has Kuma River torrent flowing through it.



Carea

Kumamoto

Hitoyoshi

Miyazaki

Ikoma Plateau

Phoenix Seagaia Resort

Maruo Waterfall

Miyazaki Bougainvillea Airport

Aoshima

Sakurajima

Fukuyama Black Vinegar Farm

Kagoshima Airport

Kagoshima

Kagoshima Masjid

Chiran

Mt.Kaimon

Koshikishima Islands

Sengan-en Garden

MUSLIM OWNER

PORK FREE

ALCOHOL FREE

PRAYER SPACE AVAILABLE

Kagoshima

This is the villa of Lord Shimazu's family which was built in the Edo period. The magnificent view of Sakurajima Island and Kinko Bay at the background captivates its visitors.



Sengan-en Garden

MAP B-2 KAGOSHIMA



Ruposhi Bangla


MAP B-2 KAGOSHIMA

Bangladeshi Specialty restaurant

Serves Bangladesh ala carte and set menu.

Authentic Bangladesh cuisine prepared by locally-experienced chef.

2-23-11, Arata, Kagoshima City, Kagoshima/☎+81-99-204-0774(English)/
Open 11:00~15:00,17:00~22:00/Closed No fixed day/
Access:Approximately 5 minutes by car from JR Kagoshima Chuo station,
Approximately 15 minutes by car from Kagoshima Interchange



Old Shuseikan

MAP B-2 KAGOSHIMA

This building was built for Japan's first mechanical spinning factory and registered as the world heritage of Japanese industrial revolution along with many other sites around Japan.



Yorimichi Cruise

MAP A-2 KAGOSHIMA

This ferry that departs from Kagoshima Port at 11:05am, makes side trips while sailing towards Sakurajima Island. The 50-minutes cruise around Kinko Bay offers a lot of surprises along the way.

Hitoyoshi

Kuma River-rafting

This is one of Japan's top three rapids where visitors can enjoy thrill-packed river-rafting. There are rapids course and clear stream course to choose from.



—Hitoyoshi folk art—

Flower box to keep valuables

A small box made of natural wood decorated with bright-coloured camellia.



Kiji-uma

The start is marked by colouring the hewn log to wish for the growth of lads.

Hitoyoshi Ryokan



Kaiseki cuisine

Halal Sukiyaki

A hotel with private hot spring bath. Serves halal meals using local ingredients.

160 Kamiaomachi, Hitoyoshi City, Kumamoto/☎+81-966-22-3141(English)/
Access:Approximately 5 minutes' walk from JR Hitoyoshi station,
Approximately 7 minutes by car from Hitoyoshi Interchange
[http://www.hitoyoshi-ryokan.com/]

Please inform us if you are a Muslim when making reservation and check the ingredients of food and drinks on your own.Halal meal is available upon reservation.It's not available on a daily bases.

Chiran



Chiran Samurai Residences

Leaving the vestiges of the Edo period are the orderly stone walls of samurai residences. Its seven gardens have been selected as one of the national scenic spots.

Chiran Paradise



Kanpachi kaiseki cuisine



Sensai tea-ceremony dishes

A spacious restaurant within the compound of Chiran Peace Park. Serves pork-free, alcohol-free Japanese cuisine, if requested in advance.

Inside Kamikaze pilot Peace Park, Chiranchohori, Minamikyushu City, Kagoshima/☎+81-993-83-3211/Open 9:00~17:00/Closed No fixed day/
Access:Approximately 30 minutes by car from JR Hirakawa station,1 minute walk from Tokko Kannon Iriguchi bus stop,15 minutes by car from Kawabe Interchange [http://www.chiranparadise.jp/]

Please inform us if you are a Muslim when making reservation and check the ingredients of food and drinks on your own.

Kirishima

Maruo Waterfall

This is a very rare hot waterfall with water sourced from the nearby Hayashida and Iodani Hot Springs. It is especially well known for its beautiful emerald green basin.



Rice-malt Theme park

Barrel Valley Praha & Gen



Rice-malt (Koji) is an important ingredient for making miso and shoyu. Visiting the rice malt exhibition will expose guests to the traditional culture of Japan. The restaurant serves pork-free Japanese cuisine using rice malt. (English-speaking guide is needed)



You can experience rice malt culture of Japan.

Serves pork-free Japanese cuisine using rice malt.

Please inform us if you are a Muslim when making reservation and check the ingredients of food and drinks on your own.

876-15 Mizobechofumoto, Kirishima City, Kagoshima./☎+81-995-58-2535/Open 8:30~18:00/Closed 26~29 December/Access:7 minutes' walk from Kagoshima Airport bus stop (shuttle bus from Kagoshima Airport is available).Approximately 3 minutes by car from Mizobe Kagoshima Airport Interchange [http://www.praha-gen.com/]

Miyazaki

Ikoma Plateau

This plateau overlooks the majestic Kirishima mountain range and Kyushu highlands. It is covered with field mustards, poppies in spring and cosmos in autumn.



Aoshima Island

Covered with rock formations called 'the demon's washboard', this sacred island is also rich with subtropical plants.



Phoenix Seagaia Resort



Hotel guest only "THE LIVING GARDEN"



All guest rooms facing the ocean (Club Twin Grand)



Nordic walk in the pine grove

A resort by the Ocean in pine grove.

Hamayama, Yamazaki-cho, Miyazaki City, Miyazaki/☎+81-985-21-1111/
Access:Approximately 20 minutes by car from JR Miyazaki station,Approximately 15 minutes from Miyazaki Interchange [http://www.seagaia.co.jp/]

Please inform us if you are a Muslim when making reservation and check the ingredients of food and drinks on your own.

column



Fukuyama Black Vinegar Farm

The field-like landscape of lined-up pots that make aged black vinegar of Fukuyama using only high-quality ingredients is spectacular.

Black vinegar Restaurant

Kurozu Village Kakuida



A splendid view of black vinegar jars field. Serves pork-free Japanese dishes using strictly selected black vinegar.(Reservation required)



Lunch with black vinegar without pork and alcoholic



Black vinegar jars field up closely to one another

311-2 Fukuyama Ota, Fukuyama-cho, Kirishima City, Kagoshima/☎+81-995-56-3231/
Open 8:30~18:00(11:00~15:00 Lunch time,14:00~17:00 Afternoon tea)/Closed No fixed day/
Access:Approximately 15 minutes by car from Kokubu Interchange
[http://kurozurestaurant.com/]

11

12

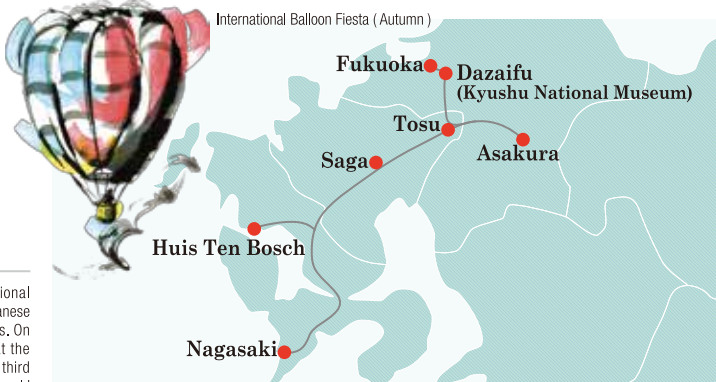
Model Course for Muslim Travellers

※Proposed time is only as a guide. ※The sunset time varies between 5~7pm depending on seasons. Please confirm the sunset time by yourself and adjust your evening travelling time accordingly. Please refer to the prayer time schedule shown in this site: <http://www.fukuokamasjid.org/>
 ※Please reconfirm with the restaurant, lodging and musalla beforehand.



A area

On the first day, visit Kyushu National Museum and stay at a hotel or Japanese inn that is famous for its hotsprings. On the second day, enjoy shopping at the outlet and the rich nature. On the third day, be mesmerized by Nagasaki's world heritage sites and spectacular night view. On the fourth day, head to Huis Ten Bosch, a theme park that reproduces the townscapes of Holland.



Take a skin-beautifying dip in hotsprings and enjoy World Heritage and theme parks at Nagasaki.

DAY 1 Fukuoka, Dazaifu, Asakura

- 9:30 START Hotel in Fukuoka
- 10:00 ARRIVE Hotel
- 10:00 START Tenjin urban tourism(2h)
- 12:00 ARRIVE Zaeka lunch (1h)
- 13:00 START Kyushu National Museum (1h)
- 13:40 ARRIVE Taisenkaku dinner, stay
- 14:40 START
- 15:30 ARRIVE



DAY 2 Tosu, Saga

- 9:00 START Taisenkaku breakfast
- 9:00 START Taisenkaku
- 10:00 ARRIVE Tosu Premium Outlets® shopping(2h)
- 12:00 START Tempura Ebina lunch(1h20min)
- 13:30 START Hotel Ryutouen
- 14:30 ARRIVE Kawakamiko Gorge sightseeing(1h)
- 15:00 Hotel Ryutoen dinner, stay
- 16:00



DAY 3 Nagasaki

- 8:30 START Ryutoen breakfast
- 8:30 START Ryutoen
- 10:00 ARRIVE Glover Garden sightseeing(2h30min)
- 12:30 START MILAN lunch (1h)
- 13:40 ARRIVE Hotel Cuore walk around Nagasaki Station (3h)
- 16:50 START Chinese Restaurant Ryuen dinner(1h)
- 17:00 ARRIVE Hotel Cuore (30min)
- 18:10 ARRIVE Nagasaki Nightview sightseeing(1h)
- 19:00 START Hotel Cuore stay
- 20:15 ARRIVE



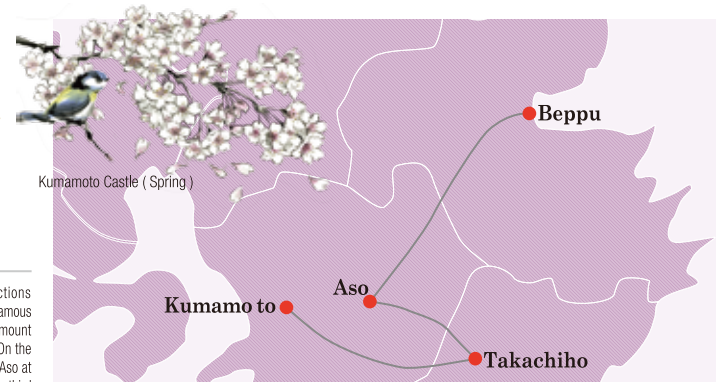
DAY 4 Huis Ten Bosch

- 8:30 START Hotel Cuore breakfast
- 8:30 START Hotel Cuore
- 10:00 ARRIVE Huis Ten Bosch attraction



B area

On the first day, enjoy various attractions including family hotspring at Beppu, an famous tourist spot that produces the largest amount of hotspring water discharge in Japan. On the second day, discover the vast spread of Aso at the foot of the majestic mountain. On the third day, visit the home of Japanese mythology, Takachiho and one of the best castles in Japan, Kumamoto Castle. On the fourth day, admire the Japanese garden in Kumamoto.



Relax at the hotspring of Beppu and discover the vast nature of Aso.

DAY 1 Beppu

- 8:00 START Hotel in Fukuoka
- 10:00 ARRIVE Hotel
- 10:00 START Beppu "Jigoku Meguri" sight seeing(2h)
- 12:30 ARRIVE Itto-Ryu lunch(45min)
- 13:15 START Beppu Masjid (20min)
- 13:25 ARRIVE Hyotan Onsen hot spring(1h 30min)
- 14:00 START Hotel
- 16:30 ARRIVE
- 17:00 ARRIVE



DAY 2 Aso

- 8:00 START Hotel
- 10:00 ARRIVE Hotel
- 10:00 START Kusasenrigahama sightseeing (2h)
- 12:00 ARRIVE Aso Plaza Hotel lunch (1h 30min)
- 12:30 START Cuddly Dominion attraction (2h30min)
- 14:15 ARRIVE Aso Plaza Hotel dinner, stay
- 16:45 ARRIVE
- 17:00 ARRIVE



DAY 3 Takachiho, Kumamoto

- 8:00 START Aso Plaza Hotel breakfast
- 8:00 START Aso Plaza Hotel
- 9:30 ARRIVE Takachiho Gorge sightseeing (2h)
- 11:30 START Shikimi lunch (1h)
- 12:00 ARRIVE Kumamoto Castle sightseeing (1h30min)
- 13:00 START Sakuranobaba Josaien shopping
- 15:00 ARRIVE Kumamoto Masjid (1h)
- 17:00 START Hotel Nikko Kumamoto dinner, stay
- 18:30 ARRIVE



DAY 4 Kumamoto

- 10:00 START Hotel Nikko Kumamoto breakfast
- 10:00 START Suizenji Park sightseeing



C area

On the first day, visit the Japanese Heritage site, and enjoy rafting the Kuma River rapids. On the second day, take a walk at the samurai residences. On the third day, take a ferry ride and feel the nature's beat by witnessing the active Sakurajima volcano before your eyes. On the fourth day, have fun at the Ocean Resort located in a huge spread of pinewoods.



Enjoy rafting and the nature of Sakurajima, and soak yourself in the Ocean Resort.

DAY 1 Hitoyoshi

- 7:30 START Hotel in Fukuoka
- 10:30 ARRIVE Hotel
- 11:45 START Tour of Hitoyoshi's Crafts and Products (1h15min)
- 12:00 ARRIVE Ayunosato lunch (1h15min)
- 13:15 START Rafting Kumagawa attraction(3h)
- 16:30 ARRIVE Ayunosato dinner, stay
- 17:00 ARRIVE



DAY 2 Kirishima, Chiran, Kagoshima

- 8:30 START Ayunosato breakfast
- 8:30 START Ayunosato
- 10:00 ARRIVE Maruo Waterfall (1h15min)
- 11:45 START Barrel Valley Praha & Gen lunch (1h15min)
- 12:15 ARRIVE Chiran Samurai Residences sightseeing(1h)
- 13:30 START Kagoshima Masjid (1h)
- 16:00 ARRIVE Ruposhi Bangula dinner(1h15min)
- 18:15 ARRIVE Hotel Shiroyama Kagoshima stay
- 20:00 ARRIVE



DAY 3 Kagoshima, Miyazaki

- 8:00 START Hotel Shiroyama Kagoshima breakfast
- 8:00 START Hotel Shiroyama Kagoshima
- 8:15 ARRIVE Kagoshima Port
- 8:15 ARRIVE ferry(Kagoshima Port→Sakurajima Port) (15min)
- 8:15 ARRIVE Sakurajima sightseeing (3h)
- 8:15 ARRIVE ferry(Sakurajima Port→Kagoshima Port) (15min)
- 12:00 START Kagoshima Port
- 12:30 ARRIVE Ruposhi Bangula lunch (1h30min)
- 14:00 START Phoenix Seagaia Resort dinner, stay
- 17:00 ARRIVE



DAY 4 Miyazaki

- 10:00 START Phoenix Seagaia Resort breakfast
- 10:00 START Phoenix Seagaia Resort attraction



[illegible][illegible][illegible][illegible]

FUKUOKA MASJID AL NOUR ISLAMIC CENTER

Fukuoka Masjid tirelessly makes contribution for Muslims living in Kyushu. The masjid provides praying space and responds to the inquiries from restaurants and hotels. Please feel free to contact us at Fukuoka Masjid.



MAP E-1 FUKUOKA

3-2-18 Hakozaki, Higashi-ku, Fukuoka city, Fukuoka
☎+81-92-641-7022
🕒 (open-close): 12:00-19:30
Prayer meetings: Every Friday from 12:15
<http://www.fukuokamasjid.org/>



CENTRAL KYUSHU MASJID BEPPU

Beppu Masjid is conveniently located facing Route No 10. Level 2 is the praying space for men, while level 3 is for women. The masjid also provides praying space for Muslim travelers. Parking is located at the first floor.



MAP B-3 BEPPU

10-19 Wakakusa, Beppu city, Oita
☎+81-90-2082-5541 (Saeed)
🕒 (open-close): No specific time (Kindly call us)



KUMAMOTO MASJID

Kumamoto Masjid is managed by Muslims residing in Kumamoto. Next to the praying space is a clean washroom. The masjid also offers praying space for Muslim travelers. You are always welcome to visit us.



MAP C-1 KUMAMOTO

5-5-2 Kurokami, Chuo-ku, Kumamoto city, Kumamoto
☎+81-90-1345-9975 (Marlo Siswahu/Director)
🕒 open: Fajr Prayer close: After Isya Prayer
<http://www.kicjapan.com/>



KAGOSHIMA MASJID

Kagoshima Masjid has been a prime praying space for Muslims residing in Kagoshima. The masjid also welcomes travelers by offering space for praying. It also plays an important role by responding to inquiries by restaurants and hotels around Kagoshima.



MAP A-2 KAGOSHIMA

84-21 Masago-cho, Kagoshima city, Kagoshima
☎+81-90-8397-4488 (Afzal)
🕒 (open-close): From Subh to Isya'
<http://www.sicc-kagoshima.org/>



Kyushu Free Wi-Fi



Kyushu Public Wireless Lan Now Available for Free!

Many places around Kyushu provide free Wi-Fi access.

♥ 4 Features

One Click Certification!

Get Tourist Information of Kyushu with a Special App!

Convenient with Multi-Lingual Service!

Coupons for Discount Deals!



How to Use the Service

① Search "JapanTravel Guide" in App Store or Google Play.

② Tap to install.



Available at the facilities and stores participating in Kyushu Free Wi-Fi Project or Japan Connected-free Wi-Fi by NTTBP. Look for this sticker!



Contact: Kyushu Tourism Promotion Organization KTP

7F Denki Bldg. Kyosokan, 2-1-82 Watanabe-dori, Chuo-ku, Fukuoka city, Fukuoka 810-0004 Japan
Tel: +81-92-751-2947 Fax: +81-92-751-2944 E-mail: qtp@welcomekyushu.jp URL: <http://welcomekyushu.com/>